



**FY 2024 Small, Rural School
Achievement
Grant Application Webinar 2**

April 11, 2024



U.S. Department of Education

A desk setup featuring a spiral-bound notebook with a teal cover, a pair of black-rimmed glasses, a yellow sticky note with the word "objectives" written in red cursive, and a silver and black fountain pen. The items are arranged on a wooden surface. A semi-transparent white box containing a list of four steps is overlaid on the left side of the image.

**By the end of this presentation,
attendees will know how to:**

1. Access the MES in order to check their LEA's eligibility and submission status.
2. Use their LEA's eligibility status to determine next steps.
3. Access and complete the SRSA application.
4. Contact the REAP team for support and/or utilize the REAP website for information.

Commonly Used Acronyms

Acronym	Meaning
ESEA	Elementary and Secondary Education Act, as amended
FY	Fiscal Year
GEPA	General Education Provisions Act
LEA	Local Educational Agency
REAP	Rural Education Achievement Program
RINAP	Rural, Insular, and Native Achievement Programs
SAM	System for Award Management
SEA	State Educational Agency
SRSA	Small, Rural School Achievement
UEI	Unique Entity Identifier



A woman with glasses and a grey hoodie is smiling and holding a tablet. The background is a wall covered in many colorful sticky notes. The image has a dark teal overlay.

Part 1: The MES and Eligibility

What is the MES?

The Master Eligibility Spreadsheet (MES) is REAP's online public spreadsheet posted in mid-January that shows:

- All LEAs in the nation
- REAP eligibility status— including dual-eligibility
- Estimated award allocations for eligible REAP programs
- Title program allocations used in the SRSA formula
- General LEA contact information
- SRSA Application Submission Status

Note: All data on this spreadsheet should be reviewed for accuracy by each LEA



The screenshot shows the website for the Office of Elementary & Secondary Education. The header includes the Department of Education logo and the text "OFFICE OF Elementary & Secondary Education". A search bar is located in the top right corner. A navigation menu below the header lists: About, Programs, Grantees and Applicants, Families, Educators, Guidance, and Resources. The breadcrumb trail reads: OESE » OFFICES/PROGRAMS BY OFFI... » OFFICE OF FORMULA GRANTS » RURAL, INSULAR & NAT... » RURAL EDUCATION ACHIEVEM... » SMALL, RURAL SCHOOL ACHI... » SRSA ELIGIBILITY. The main content area features the heading "SRSA Eligibility" in green. Below it, a paragraph states: "Below is the link to the current version of the REAP Master Eligibility Spreadsheet. Please review the information and contact your REAP State Coordinator with updates." A link is provided: "Click Here: Fiscal Year 2024 Master Eligibility Spreadsheet". A bullet point notes: "Please note that if your LEA has submitted a request to update its primary contact or other LEA information, it may take up to a week to see that change reflected on the Master Eligibility Spreadsheet here." A section titled "Who is Eligible?" follows, stating: "An LEA is eligible to participate in the SRSA program if it meets the statutory criteria of being both small and rural (see ESEA section 5211(b))." On the right side, a vertical sidebar menu titled "Small, Rural School Achievement Program" lists: SRSA Applicant Information, REAP Funding Status, SRSA Performance, SRSA Eligibility (highlighted in blue), and REAP Resources.

MES columns L-R display the most relevant information for determining an LEA's eligibility

Determining Eligibility

- LEA A - Only SRSA
- LEA B - Only RLIS
- LEA C - Dual eligible
- LEA D - Dual eligible **but** automatically RLIS because of the \$0 award
- Column R will read “YES” when a LEA has submitted their SRSA application.

	L	M	N	O	P	Q	R
	<u>FY 2024 SRSA Eligible</u>	<u>FY 2024 RLIS Eligible</u>	<u>FY 2024 RLIS Eligible Based on Hold Harmless</u>	<u>FY 2024 Dual Eligible</u>	<u>FY 2024 SRSA Estimated Allocation</u>	<u>FY 2024 RLIS Estimated Allocation</u>	<u>FY 2024 SRSA Application Received</u>
	-	-	-	-	NA	NA	
A	SRSA	-	-	-	\$34,385	NA	
B	-	RLIS	-	-	NA	\$37,378	
C	SRSA	RLIS	-	DUAL	\$21,070	\$14,628	
D	SRSA	RLIS	-	DUAL	\$0	\$16,236	
	-	-	-	-	NA	NA	
	-	-	-	-	NA	NA	
	-	RLIS	-	-	NA	\$27,742	
	-	-	-	-	NA	NA	
	-	-	-	-	NA	NA	
	-	RLIS	-	-	NA	\$31,213	
	SRSA	RLIS	-	DUAL	\$12,157	\$11,679	
	-	RLIS	-	-	NA	\$19,010	
	-	-	-	-	NA	NA	



MES Related Questions

1. What are some of the common reasons why an LEA's eligibility or estimated award would change from year to year? (ex. Last year the LEA was dual-eligible, but this year only RLIS eligible).
2. One of our contacts is not correct, how can we change this?
3. When will the FY 2024 Master Eligibility Spreadsheet (MES) be updated to reflect my LEA's application status?



A smiling woman with glasses, wearing a grey hoodie, is holding a tablet. The background is a wall covered in many colorful sticky notes (yellow, pink, blue, green). The image has a dark teal overlay.

Part 2: REAP Program Basics

What is REAP?

The **Rural Education Achievement Program (REAP, or Title V, Part B)** is a grant program designed to address the unique needs of rural school districts that may lack the personnel and resources to compete effectively for Federal competitive grants and that often receive grant allocations in amounts that are too small to be effective in meeting their intended purposes.


REAP consists of two formula grant programs:

- **Small, Rural School Achievement (SRSA):** Department makes grants directly to local educational agencies (LEAs).
- **Rural and Low-Income School (RLIS):** Department makes grants to State educational agencies (SEAs); SEAs administer subgrants to LEAs.

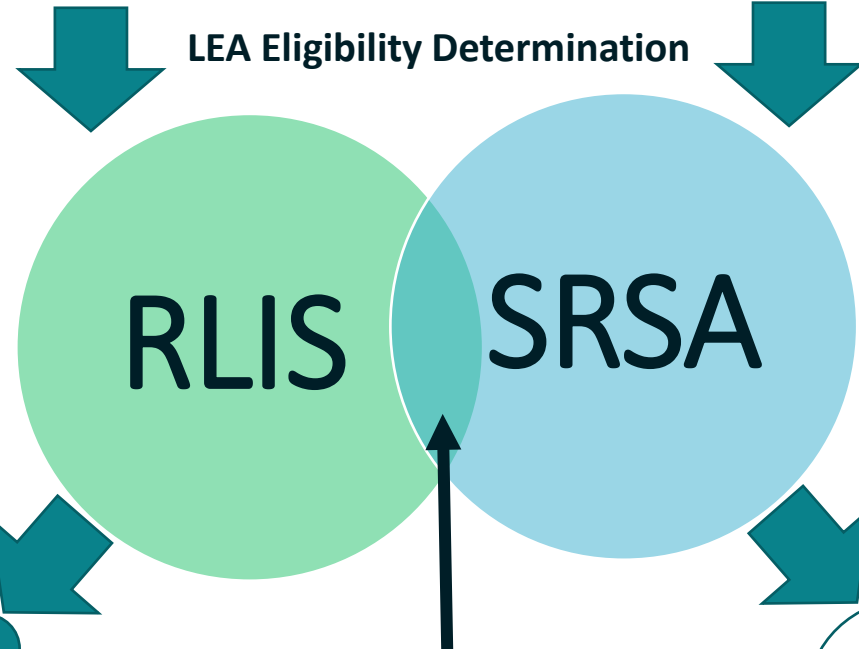


Title V: Rural Education Achievement Program

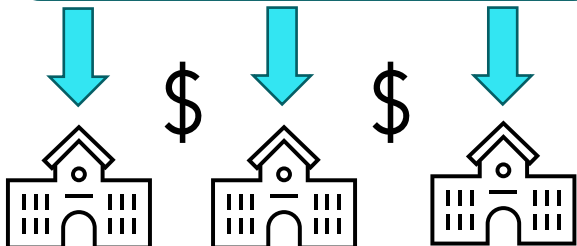
How are REAP funds distributed?

 \$220,000,000 

LEA Eligibility Determination



RLIS funds are granted to SEAs who in turn make subgrants to eligible LEAs



Dual-Eligible LEAs must select which grant program they wish to participate in!



SRSA funds are granted directly from the Department to eligible LEAs and are managed in G5

REAP Program Funding Flexibilities

- RLIS and SRSA funds can be used for activities that are allowable under multiple Title programs: Title I, Part A; Title II, Part A; Title III; Title IV, Part A; parental involvement activities (RLIS only); and Title IV, Part B (SRSA only).
- AFUA is an available flexibility for all SRSA-eligible LEAs
- SRSA fund use can be changed any time during the performance period, as long as the activity is allowable under SRSA

Understanding AFUA



Funds allocated to an SRSA-eligible LEAs under:
Title II, Part A
Title IV, Part A



Activities Allowable Under:
Title I, Part A
Title II, Part A
Title III
Title IV, Part A
Title IV, Part B



REAP Program Questions

1. Can you explain the relationship between REAP, SRSA, and RLIS?
These acronyms are confusing!
2. For dual-eligible LEAs are there any benefits to choose RLIS or SRSA over the others?
3. I'm a dual-eligible LEA and last year I was estimated to receive more under SRSA, so I applied. For FY24, I am estimated to receive more under RLIS. Can I switch back and forth between these two grant programs or will that impact my access to each year's award?



A woman with long dark hair, wearing glasses and a grey hoodie, is smiling and holding a tablet. She is standing in front of a wall covered in numerous colorful sticky notes. The image has a dark blue overlay.

Part 3: SRSA Application Overview

SRSA Application Overview

1



Locate your SRSA Application Invitation Email.

The email was sent on April 1 from
no-reply.survey@max.gov

2



Complete the application

Applications take between
10-30 minutes

Sections:

- LEA information confirmation
- GEPA statement
- Intended use of funds
- Assurances and signature
- Submission

3



Post-award

Receive confirmation email.
Review post-award information document.

Prepare for receiving funds by
ensuring your UEI and G6
accounts



SRSA Application Questions

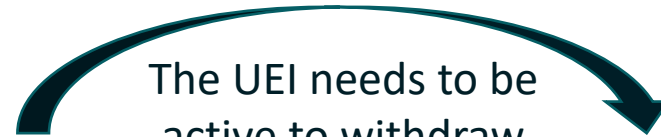
1. What do I do if I need to make a change to the information submitted in my LEA's application?
2. I forgot to print the application before closing the browser, how can I get a record of our responses?
3. I am the administrator of multiple districts/LEAs. Will I get one application email, or multiple?



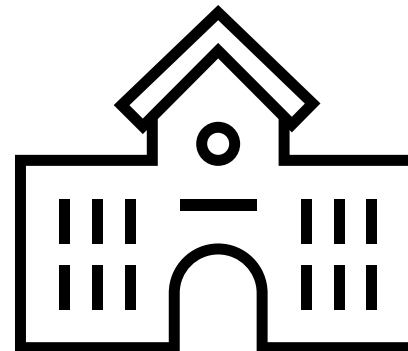
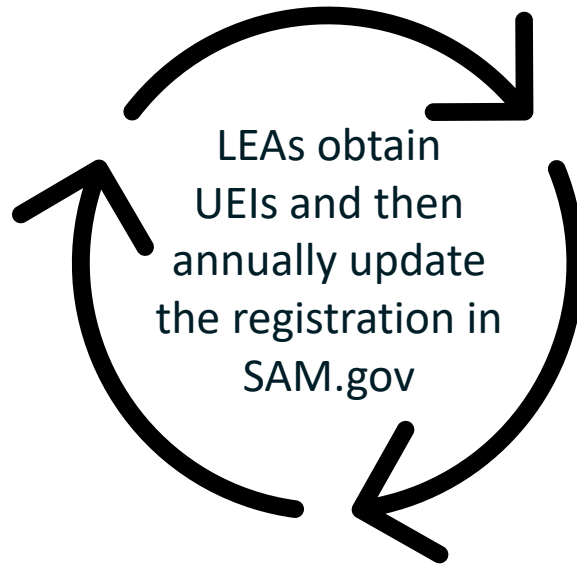
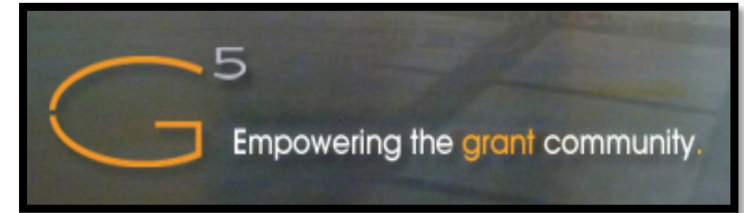
A woman with long dark hair, wearing glasses and a grey hoodie, is smiling and holding a tablet. She is standing in front of a wall covered in many colorful sticky notes (yellow, pink, blue, green). The image has a dark teal overlay.

Part 4: Next Steps & Resources

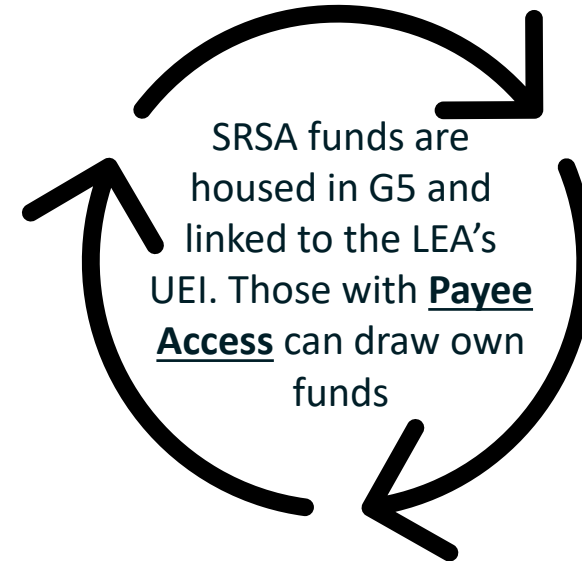
Relationship Between SAM and G5



The UEI needs to be active to withdraw funds from G5



Your LEA



Next Steps

- If you haven't checked yet, download the MES and confirm your eligibility, estimated award amounts, and contact information.
- Locate the SRSA Application invitation email from the US Department of Education, which came from no-reply.survey@max.gov on April 1.
- Submit the SRSA Application by May 10th, 2024.
- Check and maintain your UEI status on SAM.gov
- Confirm that correct staff members have G6 Payee Access

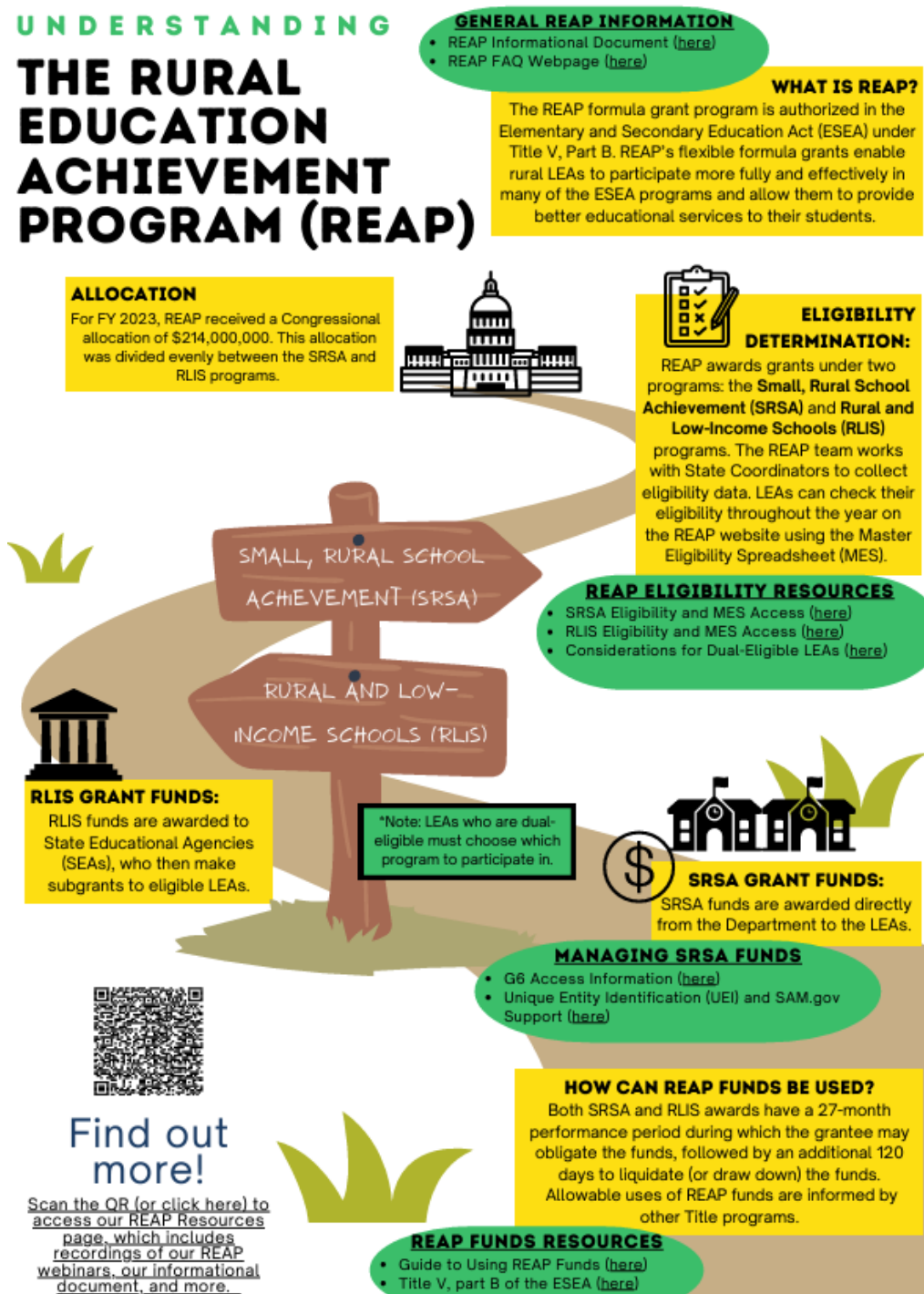


REAP Quick Links Doc

- The REAP team recently published a new and improved “REAP Quick Links Document”
- This one-page PDF includes links to resources and webpages for commonly asked questions related to the SRSA and RLIS grant programs
- It is accessible online from the REAP Resources webpage
- Please save a copy for yourself and share with your grantees: [click here to download](#)



U.S. Department of Education



Grant Maintenance Questions

1. If I already have payee access set up in G5, do I need to make a new account in G6?
2. My district is about to change superintendents before July 1, how will this effect my SRSA grant award? What do we need to do to make sure it is a smooth transition?
3. Our UEI is set to expire before July 1. Our Entity Administrator is about to retire. How do we make sure our UEI remains active?

