



Title III ED^{Facts} Data Collections

This technical assistance document aims to assist stakeholders in understanding the Title III Data Collections that are submitted to the U.S. Department of Education (ED) via the ED^{Facts} submission systems. Please refer to the [ED^{Facts} file specifications](#) or contact edfacts@ed.gov for official guidance.

Overview

Each year, states are asked to meet a number of legislative requirements under Title III, Part A of the Elementary and Secondary Education Act of 1965 (ESEA), as amended by the Every Student Succeeds Act of 2015 (ESSA), related to providing demographic and outcome data for English learners (ELs). ED collects most of these data from state educational agencies (SEAs) through the ED^{Facts} system, which is an ED initiative that centralizes ED's data collections for use in education policy, management, and budget decision-making to improve outcomes for students.

ED^{Facts}

Information contained in ED^{Facts} is divided into topical data groups (DGs) and file specification guidance, or file specs (FSs), containing the rules for submitting data for the specific data group. The reporting period, the education units required to report the data (**school, local educational agency (LEA), and SEA**), and the timespan covered by the data all vary by file spec. This document provides an overview of the relationships between Title III-related ED^{Facts} file specs and clarifies the major differences between these file specs as of the school year 2021–22 reporting period. Each **crosswalk** illustrates relationships at a different level of data collection.

Most data collections included in this document are authorized under sections 3121, 3122, and 8303 of the ESEA, as amended by the ESSA.

For more information, please refer to the forthcoming *Guide to Collecting and Reporting Title III Data*.

 Click on an icon to learn more



File Descriptions



**LEA- and SEA-Level
File Spec Crosswalk**



**School-Level
File Spec Crosswalk**

 Go to [LEA- and SEA-Level File Spec Crosswalk](#) | [School-Level File Spec Crosswalk](#)

File Descriptions

The file descriptions on this page are designed to provide a general understanding of the data collection. Please refer to the [EDFacts file specifications](#) for official definitions and guidance.

Population/Participation

FS045 Immigrant: Unduplicated number of immigrant students (as defined in Title III) enrolled during the school year.

FS067 Title III Teachers: Unduplicated number of teachers in language instructional educational programs (LIEPs) in LEAs receiving Title III funds by certification status.

FS116 Title III Students Served:

DG648

Unduplicated number of ELs enrolled in LEAs receiving Title III funds who are served by LIEPs on October 1 (or closest school day).

DG849

Number of ELs enrolled in LEAs receiving Title III funds who are served by each type of LIEP during the school year. Students served by multiple LIEPs during the school year should be counted once for each LIEP.

FS141 English Learners Enrolled:

Unduplicated number of ELs enrolled on October 1 (or closest school day).

Outcome

FS050 Title III English Language

Proficiency Results: Unduplicated number of ELs in LEAs receiving Title III funds who took the state annual English language proficiency (ELP) assessment by assessment results.

FS137 English Language Proficiency Test:

Unduplicated number of ELs enrolled at the time of the state annual ELP assessment by participation status.

FS138 Title III English Language

Proficiency Test: Unduplicated number of ELs enrolled during the time of the state annual ELP assessment and in LEAs receiving Title III funds by participation status.

FS139 English Language Proficiency

Results: Unduplicated number of ELs who took the state annual ELP assessment by assessment results.

FS211 Title III English Learners Exited:

Unduplicated number of ELs in LEAs receiving Title III funds who have exited LIEPs based on meeting the standardized, statewide exit procedures during the school year.

Longitudinal

FS126 Title III Former EL Students:

Number of students in LEAs receiving Title III funds who are in their first, second, third, or fourth year after exiting EL status by academic assessment results.

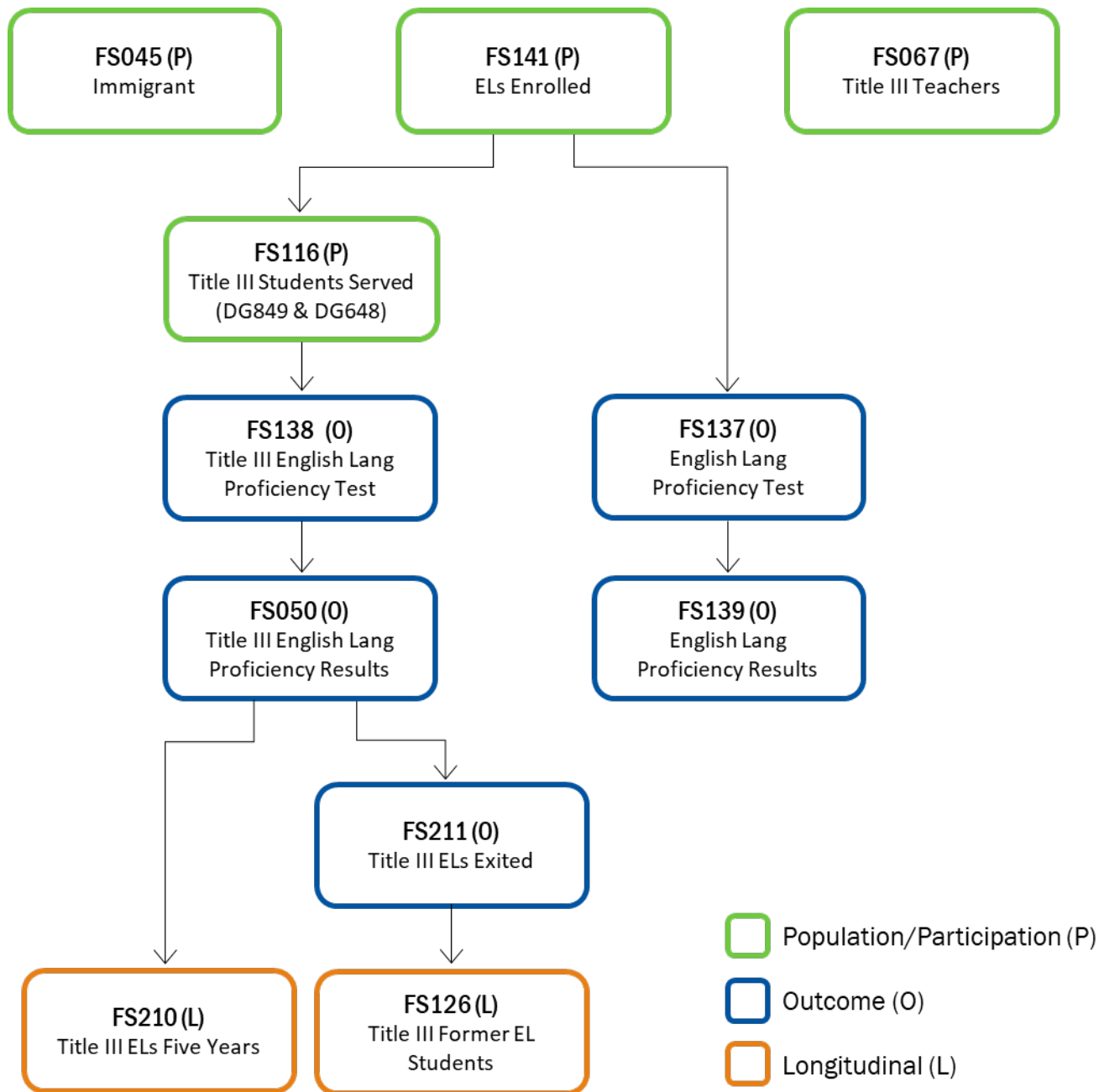
FS210 Title III English Learners Five

Years: Unduplicated number of ELs in LEAs receiving Title III funds who have or have not attained proficiency within 5 years of initial classification and first enrollment in the LEA.

LEA- and SEA-Level File Spec Crosswalk



This crosswalk illustrates relationships between Title III ED Facts file specifications (FSs) collected at the LEA and SEA levels. An arrow from A → B indicates that the population reported on in B is a subgroup of the population reported on in A, or, for longitudinal data, that the population reported on in A feeds into the population reported on in B. FSs are color coded by data type.



NOTES

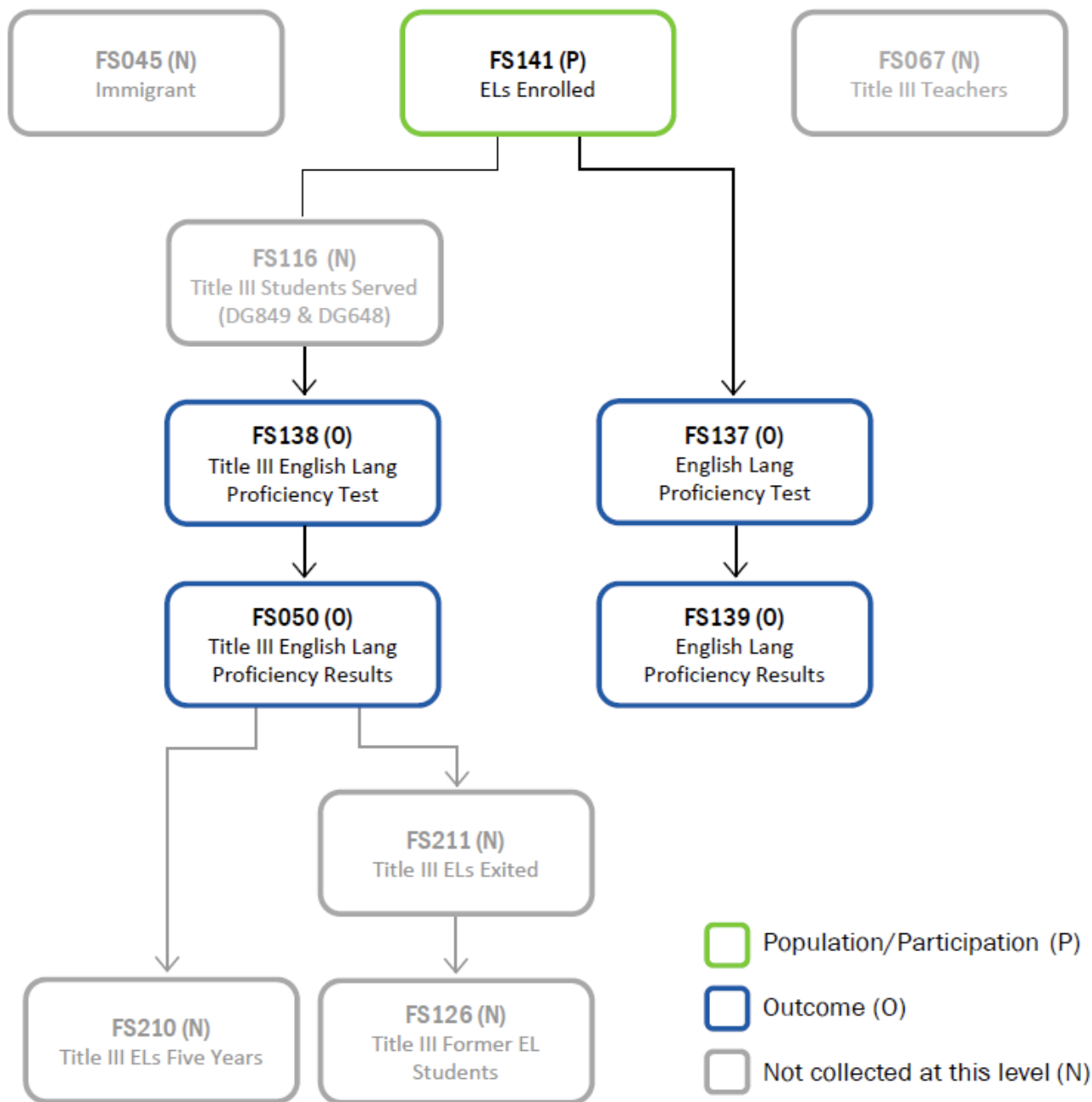
The following pairs of file specs may have some population discrepancies because some students may not have been enrolled during the reporting periods of both file specs: FS141/FS116 (DG849), FS116 (DG648)/FS138, and FS141/FS137.



School-Level File Spec Crosswalk



This crosswalk illustrates relationships between Title III ED Facts file specifications (FSs) collected at the school level. An arrow from A → B indicates that the population reported on in B is a subgroup of the population reported on in A, or for longitudinal data, that the population reported on in A feeds into the population reported on in B. FSs are color coded by data type.



NOTES

The following pairs of file specs may have some population discrepancies because some students may not have been enrolled during the reporting periods of both file specs: FS141/FS137.

[View file descriptions](#)