

## Handout 2: Framework Comparison

Each of these three frameworks is based on the same set of core research, but each is modified slightly to meet the needs of a specific context and organization.

Turnaround Principles <sup>1</sup>	5 Essentials <sup>2</sup>	Framework for Great Schools <sup>3</sup>
Strong Leadership	Effective Leaders	Effective School Leadership
Effective Teachers	Collaborative Teachers	Collaborative Teachers
Aligned and Rigorous Instruction	Ambitious Instruction	Rigorous Instruction
Student-Centered Environment/Climate	Supportive Environment	Supportive Environment
Family and Community Engagement	Involved Families	Strong Family–Community Ties
Redesign of Time for Learning and Collaboration		Trust
Data to Inform Instruction and Improvement		

<sup>1</sup> Illinois Center for School Improvement. (n.d.). *Turnaround principles*. Retrieved from <https://www.isbe.net/Pages/IL-Empower.aspx>

<sup>2</sup> UChicago Impact. (2017). *5Essentials*. Retrieved from <https://uchicagoimpact.org/tools-training/5essentials>

<sup>3</sup> New York City Department of Education. (n.d.). *Building capacity and improving results for all*. Retrieved from <https://www.schools.nyc.gov/about-us/vision-and-mission/framework-for-great-schools>

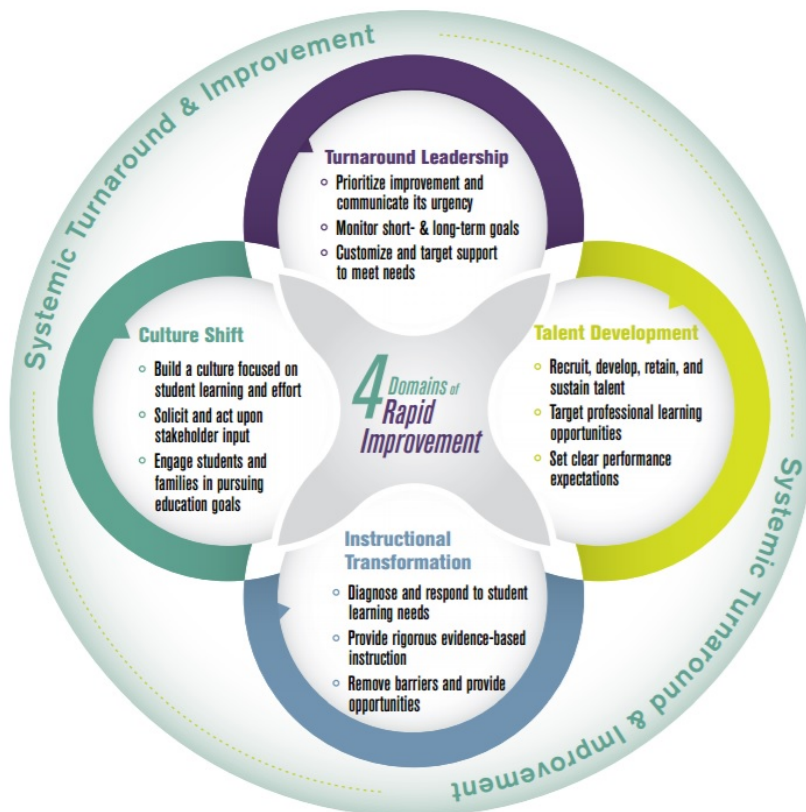
# Center for School Turnaround Domains

Domain 1: Turnaround Leadership

Domain 2: Talent Development

Domain 3: Instructional Transformation

Domain 4: Culture Shift



The Center on School Turnaround at WestEd. (2017). *Four domains for rapid school improvement: A systems framework*. San Francisco, CA: WestEd. Retrieved from <https://files.eric.ed.gov/fulltext/ED583980.pdf>