



Supporting Effective Educator Development

SEED Program Overview

Note: These slides are intended as guidance only. Please refer to the official Notice published in the *Federal Register*.

AGENDA

- SEED Program Overview
- Eligible Entities
- Program Requirements

SEED PROGRAM OVERVIEW

History

- Originally authorized in the FY2011 Appropriation Act for the Department.
- Current version of program authorized in 2015 under the Every Student Succeeds Act. See the [Awards](#) page on our website for past and current grantees.

Purpose

To provide grants to increase the number of highly effective educators by supporting the implementation of Evidence-Based preparation, professional development, or professional enhancement opportunities for educators.

ELIGIBLE ENTITIES

INSTITUTIONS OF HIGHER EDUCATION

- “An Institution of Higher Education (IHE) that provides course materials or resources that are evidence-based in increasing academic achievement, graduation rates, or rates of postsecondary education matriculation.”
- Definition of IHE is taken from Higher Education Act provided in NIA as a reference.
- Applicants should provide an explanation of how they meet this definition and what materials or resources they are providing that are evidence-based.

ELIGIBLE ENTITIES

NATIONAL NONPROFIT ORGANIZATIONS

- “A national nonprofit organization with a demonstrated record of raising student academic achievement, graduation rates, and rates of higher education attendance, matriculation, or completion, or of effectiveness in providing preparation and professional development activities and programs for teachers, principals, or other school leaders.”
- Applicants should provide an explanation of how they meet this standard, including their demonstrated record of success.

ELIGIBLE ENTITIES

OTHER ENTITIES

- The Bureau of Indian Education
- A partnership consisting of--
 - One or more entities described in previous slides (IHE or NNO) and
 - A for-profit entity
- Applicants should provide an explanation of how they meet one of these requirements.

PROGRAM REQUIREMENTS

MATCHING REQUIREMENT

- Grantees are required to match 25% of the total project cost for each year of the grant. (33% of Federal Funds)

Total Project Cost	=	Federal Funds	+	Matching Funds
\$1,000,000	=	\$750,000	+	\$250,000

- Matching funds may be provided as cash or as in-kind contributions to the project.
 - In-kind contributions could include items such as salaries, supplies, or provision of space or facilities to support the project.
 - Must be allowable as federal funds.
- Applicants may request a waiver by demonstrating current financial hardship for any year they are unable to meet the match requirement.
 - Past funding cuts will be considered only if they are still relevant.



PROGRAM REQUIREMENTS

RESTRICTED INDIRECT COST RATE

- Grant funds must “Supplement, Not Supplant” existing funding.
- Restricted indirect cost rate program
 - Placeholder rate of 8% if no negotiated rate
 - See [34 CFR 75.563](#) and 34 CFR 76.564 - 76.569 for calculating rate

(<https://www.ecfr.gov/cgi-bin/text-idx?node=34:1.1.1.1.22&rgn=div5>)

- If higher rate negotiated during project period, may switch to that rate.
- Difference between restricted and unrestricted rate may not be counted as match.



PROGRAM REQUIREMENTS

OTHER GENERAL REQUIREMENTS

- Length of award (3 + 2 years)
 - Submit a 5 year budget
 - 2-year extension determined during grant period to achieve scaling or sustainability goals based on project performance
- Certification of no service fees to students or parents
- One award per organization
- Geographic diversity of awards (urban, rural, suburban)
- Open licensing of copyrightable grant deliverables created with ED funds

PROGRAM REQUIREMENTS

OPEN LICENSING OF GRANT DELIVERABLES

All Department of Education grantees awarded competitive grant funds, unless an exception applies, must openly license to the public all copyrightable grant deliverables that are created with Department grant funds, including such deliverable as educational software, curriculum materials, professional development training materials, assessment systems, etc. This requirement applies to SEED grants.

Purposes:

- Promotes efficient dissemination of grant-funded works.
- Promotes innovation through creative re-use of grant funded works.

The Rule:

<https://www.federalregister.gov/documents/2017/01/19/2017-00910/open-licensing-requirement-for-competitive-grant-programs>



PROGRAM REQUIREMENTS

WHAT DOES OPEN LICENSING MEAN?

Under an open license, the public is given permission...

- to access, reproduce, publicly perform, publicly display, and distribute the copyrightable work
- to prepare derivative works
- to otherwise use the copyrightable work created with grant funds, provided that attribution is given to the copyright holder.

Note: Grantees may use any open licenses that comply with the rule (see additional conditions in the actual rule), including a license that limits use to noncommercial purposes.



OPEN LICENSING REQUIREMENT

ADDITIONAL INFORMATION

- Deliverables:
 - Final versions of a work developed to carry out the purpose of the grant
 - any final version of program support materials necessary use the deliverables
- Does not apply to pre-existing works
- Does apply to modifications of pre-existing works
- Grantees and subgrantees must have a plan to disseminate the openly licensed copyrightable works

Note: In some limited cases, exceptions to the rule may be granted by the Department. However, such exceptions will not be considered until after grant awards are made, and applicants must not assume that an exception would be granted.



IMPORTANT RESOURCES

- SEED Website:

<https://innovation.ed.gov/what-we-do/teacher-quality/supporting-effective-educator-development-grant-program/>

- Competition updates
- Past and current grantee information
- Program evaluation design and implementation resources

All questions about SEED may be sent to SEED@ed.gov





Supporting Effective Educator Development

FY 2018 SEED Competition Overview

Note: These slides are intended as guidance only. Please refer to the official Notice published in the *Federal Register*.

AGENDA

- Priorities
- Evidence Standards
- Selection Criteria
- Competition Timeline and Resources

PRIORITIES

Absolute Priorities



AP 1: Supporting
Effective Teachers



AP 2: Supporting
Effective Principals or
Other School Leaders

Must either address AP1 or AP2, not both.

Competitive Priority

CPP: Promoting Science,
Technology, Engineering, and
Math (STEM) Education, With a
Particular Focus on Computer
Science

Invitational Priority:
Support for the Use of
Micro-Credentials

May address any combination of CPP or IP.



PRIORITIES

ABSOLUTE PRIORITIES

- Applicants must respond to either Absolute Priority 1 or Absolute Priority 2, but not both.
- Applicants must clearly identify the absolute priority for which they are applying.
- Applicants' approaches to the Absolute Priorities will be reviewed and receive points based on the selection criteria.
- Specific wording for priorities may be found in the NIA on the SEED website:

<https://innovation.ed.gov/what-we-do/teacher-quality/supporting-effective-educator-development-grant-program/applicant-info-and-eligibility/>



ABSOLUTE PRIORITIES

ABSOLUTE PRIORITY 1: SUPPORTING EFFECTIVE TEACHERS

Moderate
Evidence

“This priority is for projects that will implement activities that are supported by Moderate Evidence.”

Primary
Priority Areas

- (1) Providing teachers from nontraditional preparation and certification routes or pathways to serve in traditionally underserved LEAs;
- (2) Providing teachers with Evidence-Based Professional Development activities that address literacy, numeracy, remedial, or other needs of LEAs and the students the agencies serve; or
- (3) Providing teachers with Evidence-Based professional enhancement activities, which may include activities that lead to an advanced credential.

ABSOLUTE PRIORITIES

ABSOLUTE PRIORITY 2: SUPPORTING EFFECTIVE PRINCIPALS AND OTHER SCHOOL LEADERS

Promising
Evidence

“This priority is for projects that will implement activities that are supported by Promising Evidence.”

Primary
Priority Areas

- (1) Providing principals or other School Leaders from nontraditional preparation and certification routes or pathways to serve in traditionally underserved LEAs;
- (2) Providing principals or other School leaders with Evidence-Based Professional Development activities that address literacy, numeracy, remedial, or other needs of LEAs and the students the agencies serve; or
- (3) Providing principals or other School Leaders with Evidence-Based professional enhancement activities, which may include activities that lead to an advanced credential.



PRIORITIES

COMPETITIVE PREFERENCE PRIORITY

- One optional priority that applicants may choose to include in their projects.
- Applicants should clearly identify whether they are applying for this priority
- Applicants may receive up to 3 additional points based on how well they address this priority, at the discretion of reviewers.
- Specific wording for the CPP may be found in the NIA on the SEED website:

<https://innovation.ed.gov/what-we-do/teacher-quality/supporting-effective-educator-development-grant-program/applicant-info-and-eligibility/>



COMPETITIVE PREFERENCE PRIORITY

PROMOTING STEM EDUCATION, WITH A PARTICULAR FOCUS ON
COMPUTER SCIENCE (0-3 PTS)

Improving STEM
or Computer
Science
Outcomes

“Projects designed to improve... outcomes in one or more of the following areas: science, technology, engineering, math, or Computer Science.”

Possible
Priority Areas

Increasing number of educators prepared to deliver rigorous instruction in STEM fields:

- (1) Recruitment
- (2) Evidence-Based Professional Development strategies, or
- (3) Evidence-Based retraining strategies.



PRIORITIES

INVITATIONAL PRIORITY

- One optional priority that applicants may choose to include in their projects.
- Applicants do not receive any competitive advantage or points for their response to the Invitational Priority.

Note: Invitational Priorities are used as exploratory priorities for ED to learn more about what the field is doing in that particular area.

INVITATIONAL PRIORITY

SUPPORT FOR THE USE OF MICRO-CREDENTIALS.

Under this priority, we are interested in projects that support teachers, principals, or other School Leaders earning micro-credentials based on demonstrated mastery of specific skills or competencies through the use of performance-based outcomes. The micro-credentials should be portable across schools, LEAs, or States.

- Applicants will not receive any additional points.
- Priority documentation will be reviewed by peer reviewers, but only scored as it may pertain to the selection criteria.



EVIDENCE STANDARDS

OVERVIEW

- Applicants under AP1: Supporting Effective Teachers will need to submit studies that meet the Moderate Evidence definition.
 - Applicants under AP2: Supporting Effective Principals or Other School Leaders will need to submit studies that meet the Promising Evidence definition.
 - Applicants may submit up to 2 citations to support their project.
 - Three citation options:
 - WWC Practice Guides Recommendation
 - WWC Intervention Reports
 - Publicly Available Studies
- ([Teacher Training, Evaluation, and Compensation Evidence Review Protocol](#))



EVIDENCE STANDARDS

OPTION (i) PRACTICE GUIDE RECOMMENDATIONS

	Moderate Evidence (AP1)	Promising Evidence (AP2)
Relevance	Evidence of effectiveness of key Project Component improving Relevant Outcome for sample that overlaps with populations or settings proposed	Evidence of effectiveness of key Project Component improving Relevant Outcome
Source	Prepared by the WWC using version 2.1 or 3.0 of the WWC Handbook	Prepared by WWC using any version of the WWC Handbook
Strength of Evidence	Reporting a “strong evidence base” or “moderate evidence base”	Reporting a “strong evidence base” or “moderate evidence base”



EVIDENCE STANDARDS

OPTION (ii) INTERVENTION REPORTS

	Moderate Evidence (AP1)	Promising Evidence (AP2)
Relevance	Evidence of effectiveness of key Project Component improving Relevant Outcome for sample that overlaps with populations or settings proposed	Evidence of effectiveness of key Project Component improving Relevant Outcome
Source	Prepared by the WWC using version 2.1 or 3.0 of the WWC Handbook	Prepared by WWC using any version of the WWC Handbook
Strength of Evidence	“Positive effect” or “potentially positive effect” on a Relevant Outcome based on a “medium to large” extent of evidence, no reporting of a “negative effect” or “potentially negative effect”	“Positive effect” or “potentially positive effect” on a Relevant Outcome, no reporting of a “negative effect” or “potentially negative effect”

EVIDENCE STANDARDS

OPTION (iii) STUDIES

	Moderate Evidence (AP1)	Promising Evidence (AP2)
Number of Studies	At least one; may combine studies	At least one
Study Design	Meets WWC Standards* with or without reservations	Correlational study with statistical controls for selection bias, Experimental, or Quasi-Experimental studies
Statistical Significance	Statistically significant positive impact on a Relevant Outcome (with no unfavorable impacts)	Statistically significant positive impact on a Relevant Outcome
Similarity of Population	Overlaps with proposed populations or settings	No overlap required
Sample Size	Large Sample (at least 350, may combine samples from two studies)	No minimum requirement
Number of Study Sites	Multi-site Sample	No minimum requirement

* See the WWC Handbook v3.0 for more information: <http://ies.ed.gov/ncee/wwc/DocumentSum.aspx?sid=19>.

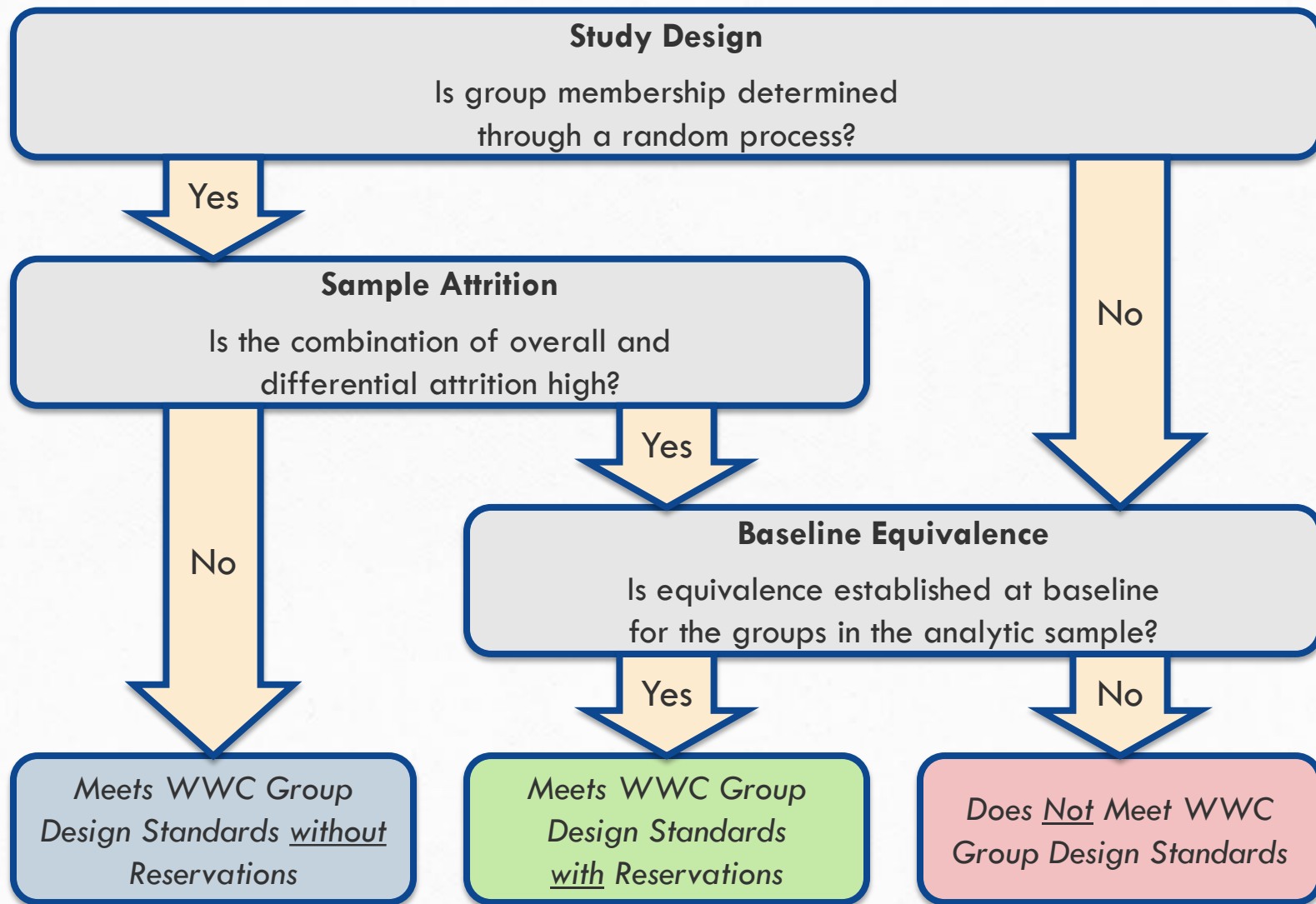
The [Teacher Training, Evaluation, and Compensation Evidence Review Protocol](#) will be used in this competition.



EVIDENCE STANDARDS

STUDY REVIEW FLOWCHART

Source: WWC Procedures and Standards Handbook v3.0, page 9.



SELECTION CRITERIA

OVERVIEW

- All selection criteria will be scored by peer reviewers.
 - Quality of the Project Design: 35 points
 - Significance: 20 points
 - Quality of the Management Plan: 25 points
 - Quality of the Project Evaluation: 20 points
- Grantees selected based on peer reviewer scores.
- Specific wording for each selection criterion may be found in the NIA at the SEED website:

<https://innovation.ed.gov/what-we-do/teacher-quality/supporting-effective-educator-development-grant-program/applicant-info-and-eligibility/>



SELECTION CRITERIA

QUALITY OF THE PROJECT DESIGN (35 POINTS)

Strong Approach to Priorities

“...proposed project represents an exceptional approach to the priority or priorities established for the competition.”

Sufficient Services to Lead to Improvement

“...the training or Professional Development services to be provided...will be of sufficient quality, intensity, and duration to lead to improvements in practice among the recipients of those services.”

Strong Partnerships

“...the collaboration of appropriate partners for maximizing the effectiveness of project services.”



SELECTION CRITERIA

PROJECT DESIGN CONT. (35 POINTS)

Focused on
Greatest Needs

“The extent to which the services to be provided by the proposed project are focused on those with greatest needs.”

Design
Addresses
Particular Needs

“The extent to which the design of the proposed project is appropriate to, and will successfully address, the needs of the target population or other identified needs.”

SELECTION CRITERIA

SIGNIFICANCE (20 POINTS)

Significance of Outcomes

“The importance or magnitude of the results or outcomes likely to be attained...”

Reasonableness of Costs

“The extent to which the costs are reasonable in relation to the number of persons to be served and to the anticipated results and benefits.”

Sustainability of Project

“...incorporation of project purposes, activities, or benefits into the ongoing program of the agency or organization...”

Dissemination

“...results of the proposed project are to be disseminated in ways that will enable others to use the information or strategies.”



SELECTION CRITERIA

QUALITY OF THE MANAGEMENT PLAN (25 POINTS)

Clear and
Measurable
Outcomes

“goals, objectives, and outcomes to be achieved by the proposed project are clearly specified and measurable.”

Clear Plan to
Keep Project on
Track

“...plan to achieve the objectives of the proposed project on time and within budget, including clearly defined responsibilities, timelines, and milestones...”

Continuous
Improvement

“...procedures for ensuring feedback and continuous improvement...”



SELECTION CRITERIA

QUALITY OF THE PROJECT EVALUATION (20 POINTS)

Produce
Rigorous
Evidence

“...produce evidence about the project's effectiveness that would meet WWC Standards with or without reservations...”

Formative Data

“...evaluation will provide performance feedback and permit periodic assessment of progress toward achieving intended outcomes.”

Quantitative and
Qualitative Data

“...methods of evaluation include the use of objective performance measures that are clearly related to the intended outcomes of the project and will produce quantitative and qualitative data...”

Valid and
Reliable Data

“...methods of evaluation will provide valid and reliable performance data on Relevant Outcomes.”

* See the SEED website for resources related to designing and implementing evaluations on educator development programs:
<https://innovation.ed.gov/what-we-do/teacher-quality/supporting-effective-educator-development-grant-program/evaluation-resources/>



APPLICATION TIMELINE

Date	Event
4/5/18	Intent to Apply Due
5/17/18	SEED Application Deadline
Sept 2018	SEED Grants Awarded

- See the SEED website for updated information:
<https://innovation.ed.gov/what-we-do/teacher-quality/supporting-effective-educator-development-grant-program/applicant-info-and-eligibility/>
- We will still accept Intents to Apply after the deadline, though they are not required to be eligible to apply.
 - ➔ Submit intents to apply here: www.surveymonkey.com/r/HZV7XQ6
- Applications time stamped after 4:30:00 PM DC Time will not be reviewed.



IMPORTANT RESOURCES

■ SEED Website:

<https://innovation.ed.gov/what-we-do/teacher-quality/supporting-effective-educator-development-grant-program/applicant-info-and-eligibility/>

- Notice Inviting Applications
- Application Package (sample)
- Additional SEED competition informational webinar recordings
- Evidence webinar and checklists
- Applications from Past Winners

■ Evaluation Resources:

<https://innovation.ed.gov/what-we-do/teacher-quality/supporting-effective-educator-development-grant-program/evaluation-resources/>

All questions about SEED may be sent to SEED@ed.gov





Supporting Effective Educator Development

FY 2018 SEED Application Process

Note: These slides are intended as guidance only. Please refer to the official Notice published in the *Federal Register*.

APPLICATION PROCESS

SUBMITTING AN APPLICATION

- Applications for the SEED competition are submitted electronically using the Grants.gov site (www.Grants.gov) unless a request for an exception is submitted no later than two weeks before the application deadline.
- All applicants must use the Workspace system in Grants.gov
 - <https://www.grants.gov/web/grants/applicants/workspace-overview.html>
- To submit an application in Grants.gov, your organization must have an active System for Award Management (SAM) registration.
 - Please verify that SAM registration is active, update annually
 - Takes 24-48 hours for active SAM registration to transfer to Grants.gov



APPLICATION PROCESS

REGISTERING IN GRANTS.GOV

- In order to apply for a SEED grant, you must complete the Grants.gov registration process.
 - Go to the Applicants tab, then the Get Registered section, then the Organization Applicant Registration section.
 - You must obtain a DUNS number and register with SAM (System for Award Management) as part of this process.
- The full registration process can take a few days or several weeks, depending on your organization's unique situation.

So please register EARLY!



APPLICATION PROCESS

APPLYING FOR A SEED GRANT

- To apply for a SEED grant, enter keyword “SEED” in the search bar on the right side of the Grants.gov homepage.
- Select ED-GRANTS-032118-002, which is the Opportunity Number for this competition. Click on the link, then click on the Package tab. Under Actions, click Select Package and follow the instructions.
- Please review the Grants.gov Applicant FAQs as you prepare and submit your application.
- Contact the Grants.gov Help Desk if you experience problems submitting your application.
 - Phone: 1-800-518-4726
 - Email: support@grants.gov



APPLICATION PROCESS

CAUTIONS FROM PREVIOUS COMPETITIONS

- Upload PDFs

- All files uploaded into Grants.gov must be in PDF format; all other file formats may not convert properly.

- Submit Early

- Applications submitted after the May 17, 2018 (4:30:00 PM Washington, DC time) deadline will be rejected.

READ THE NOTICE, UNDERSTAND THE REQUIREMENTS,
AND PLAN AHEAD

APPLICATION PROCESS

REQUIRED FORMS

- SF 424 Application Form for Federal Assistance
- ED Supplemental Form for SF 424
- ED 524 Form (Budget Summary Form)
- Evidence of Effectiveness Form
- Grant Application Form for Project Objectives and Performance Measures
- SF-LLL Disclosure of Lobbying Activities
- General Education Provisions Act (GEPA) Requirements - Section 427
- Grants.gov Certification Regarding Lobbying (formerly ED 80-0013)
- SF 424B Form - Assurances, Non-Construction Programs



APPLICATION PROCESS

APPLICATION TIMELINE

Date	Event
4/5/18	Intent to Apply Due
5/17/18	SEED Application Deadline
Sept 2018	SEED Grants Awarded

- See the SEED website for updated information:
<https://innovation.ed.gov/what-we-do/teacher-quality/supporting-effective-educator-development-grant-program/applicant-info-and-eligibility/>
- We will still accept Intents to Apply after the deadline, though they are not required to be eligible to apply.
 - ➔ Submit intents to apply here: www.surveymonkey.com/r/HZV7XQ6
- Applications time stamped after 4:30:00 PM DC Time will not be reviewed.



IMPORTANT RESOURCES

■ SEED Website:

<https://innovation.ed.gov/what-we-do/teacher-quality/supporting-effective-educator-development-grant-program/applicant-info-and-eligibility/>

- Notice Inviting Applications
- Application Package (sample)
- Additional SEED competition informational webinar recordings
- Evidence webinar and checklists
- Applications from Past Winners

■ Evaluation Resources:

<https://innovation.ed.gov/what-we-do/teacher-quality/supporting-effective-educator-development-grant-program/evaluation-resources/>

All questions about SEED may be sent to SEED@ed.gov

